

Cosmos Rx • Crossings Rx  
Infinity Rx • Strait Rx



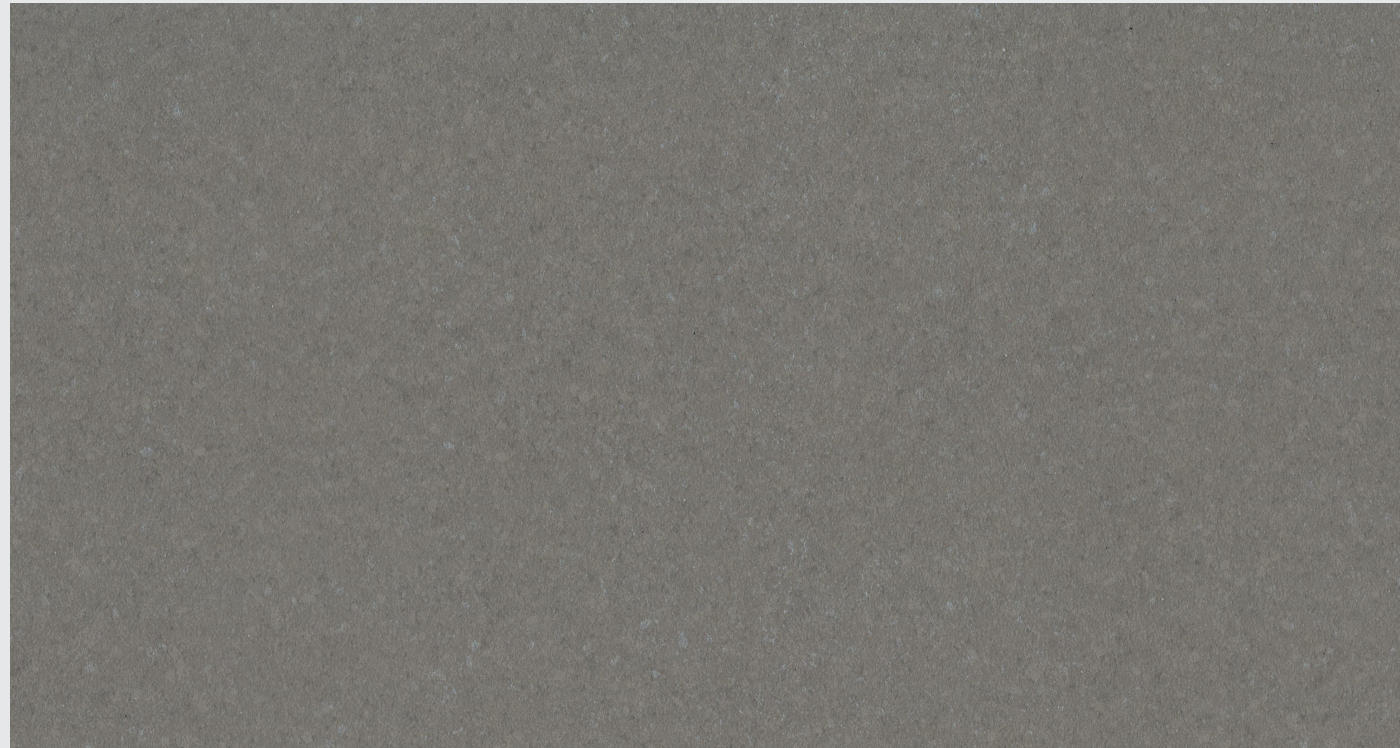
Cosmos Rx • Crossings Rx •  
Infinity Rx • Strait Rx

Technical Details

Performance Criteria	Test Standard	Results
Static Load Limit	ASTM F970 modified	0.004" (@ 1,000 psi) after 96 hours
Coefficient of Friction	ASTM D2047	> 0.6
FloorScore	FloorScore	Certified
Reaction to Fire	ASTM E648	Class 1
Abrasion Resistance	ASTM D3389	< 1g, 1000 cycles
Impact Insulation Class *	ASTM E492	52
Delta IIC *	ASTM E2179	23
Floor Impact Sound	ASTM E3133	77 dBA
Force Reduction	Deltec	11.5%
Energy Restitution	Deltec	72.0%



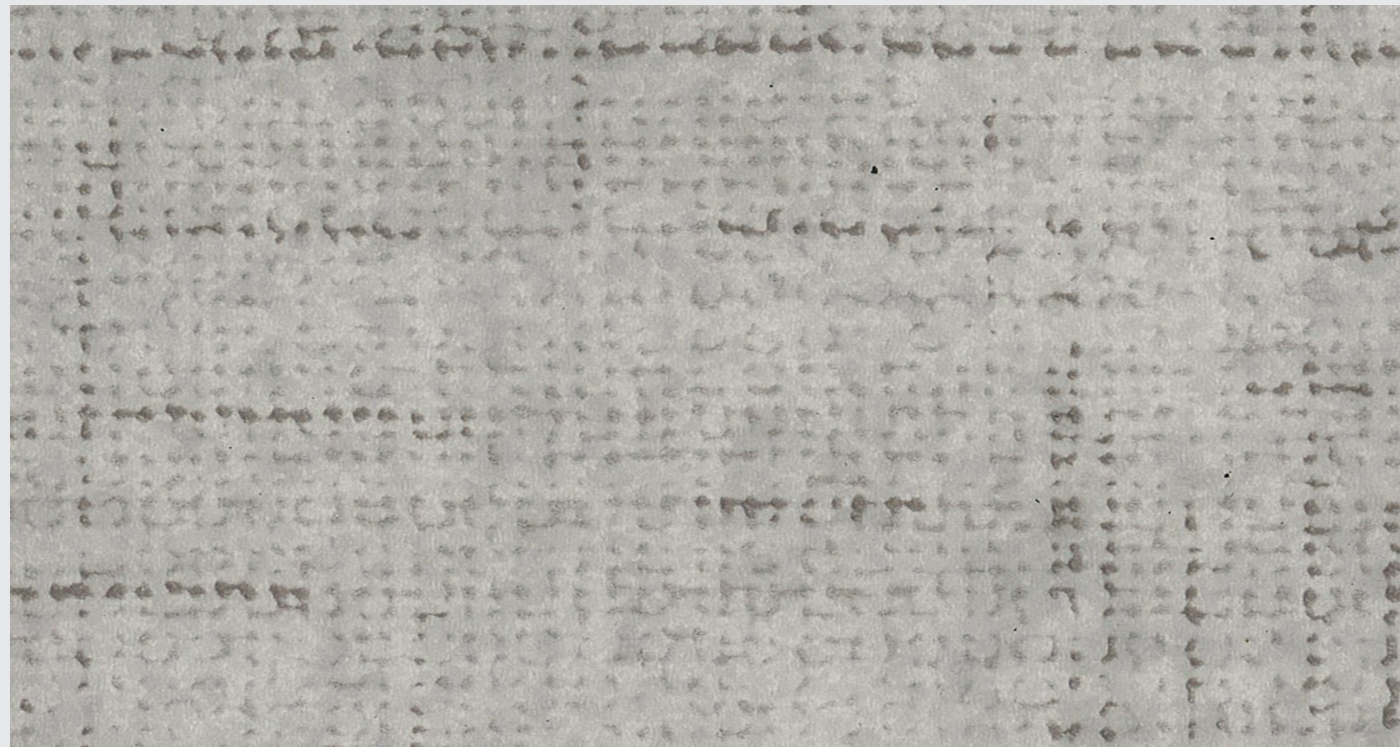
Cosmos Rx



Infinity Rx



Crossings Rx



Strait Rx





# Cosmos Rx



MORNING STAR

9840



SHOOTING STAR

9819



HALO

9841



METEOR

9816



NEW MOON

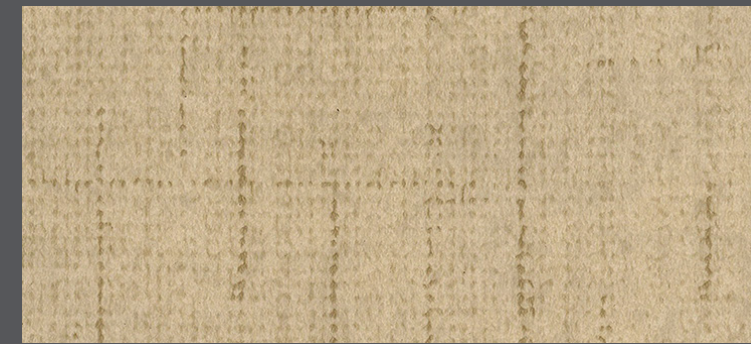
9928



DARK MATTER

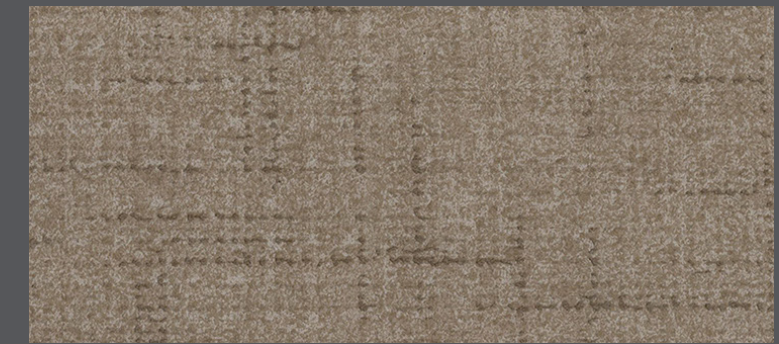
9938

# Crossings Rx



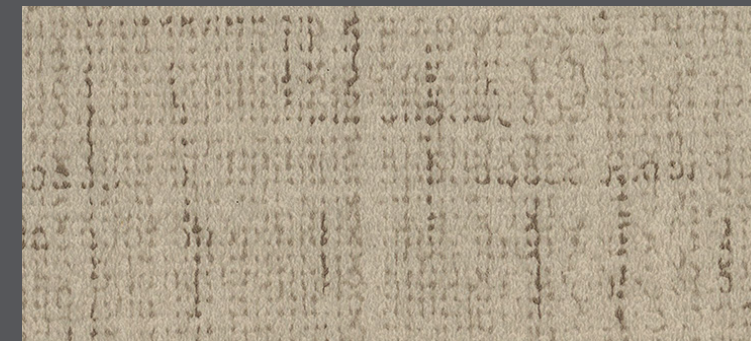
WHEATLAND

3185



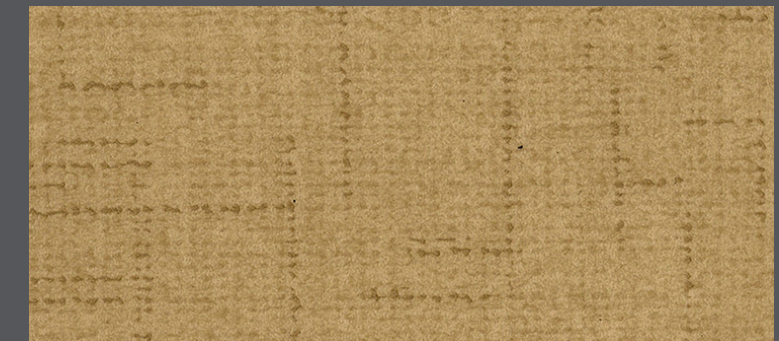
PRINCE

3183



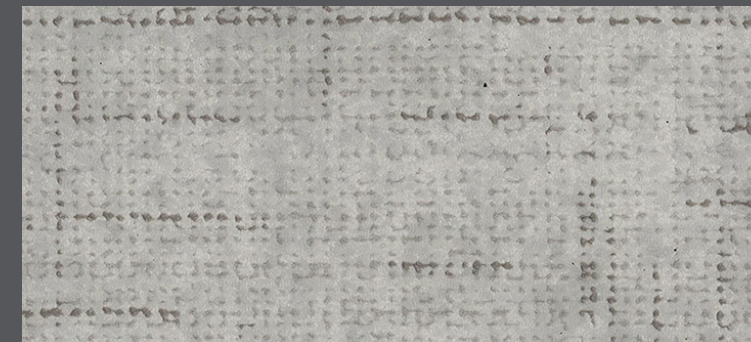
KING

3181



LIBERTY

3187



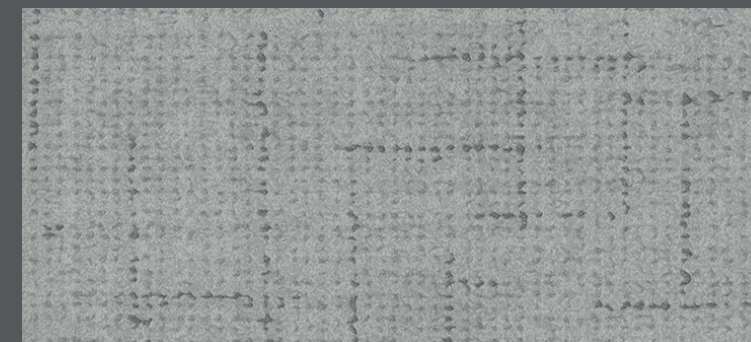
MARKET

3188



QUEEN

3182



DUKE

3184



FOUNTAIN

3186



Actual samples and final product may vary from color swatches shown. For additional information, please visit [ecosurfaces.com](http://ecosurfaces.com).

## Dimensions

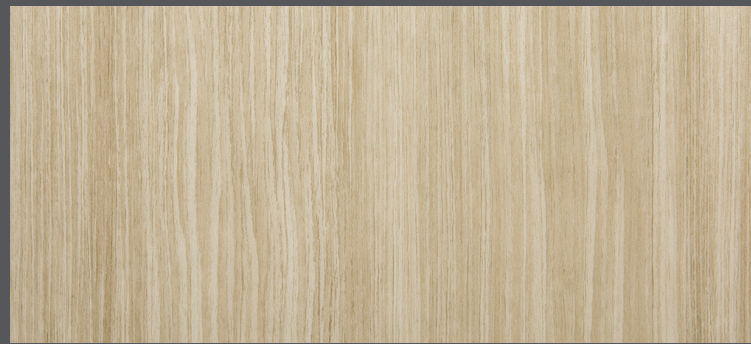
7mm Rolls (2mm + 5mm)  
72" (1.83m) x 30LF (9.14m)



BUILT ON  
**itsTRU**  
TECHNOLOGY



# Infinity Rx



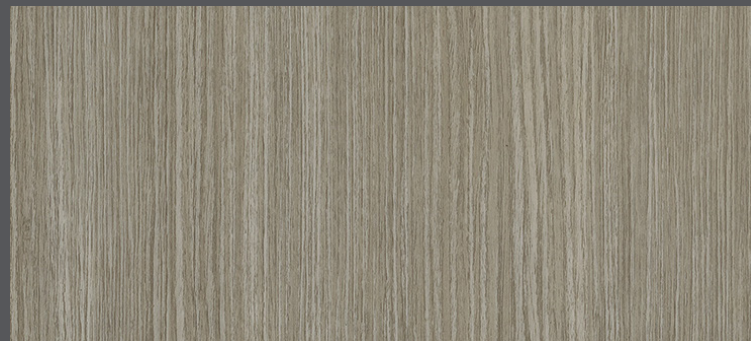
ASH BLOND

9815



HONEY BEIGE

9869



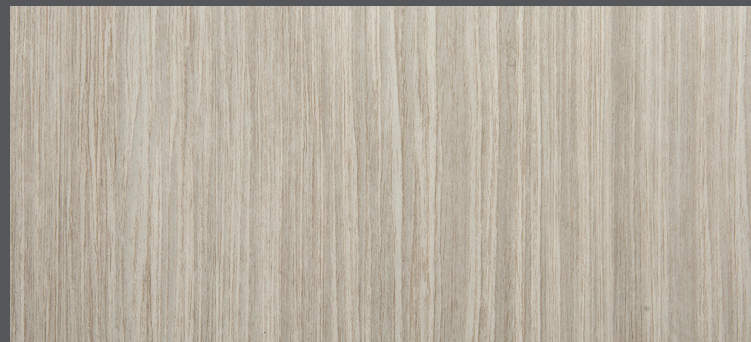
SMOKE

9909



CRÈME CARAMEL

9818



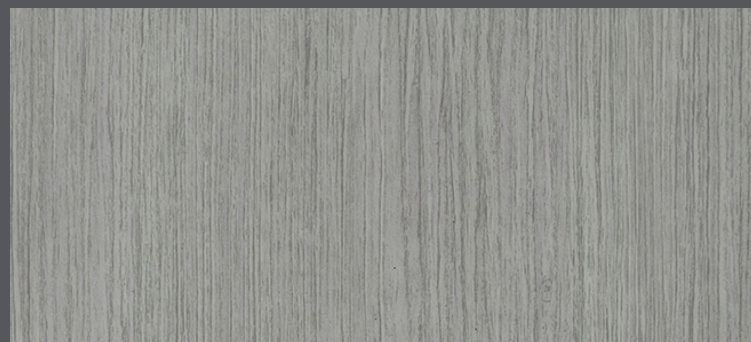
SILVER LINING

9814



SABLE

3195



SNOW MIST

3196



STEEL BLUE

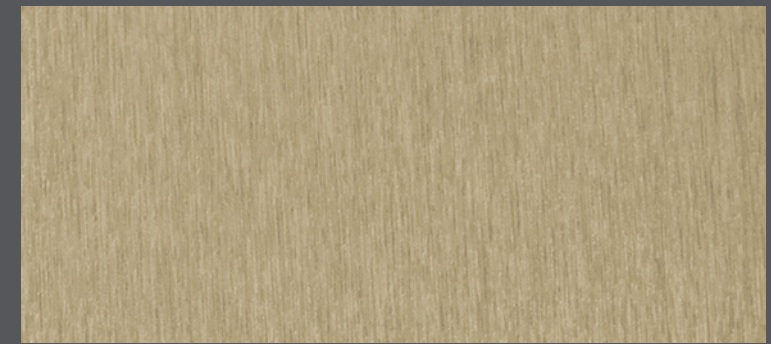
3194

# Strait Rx



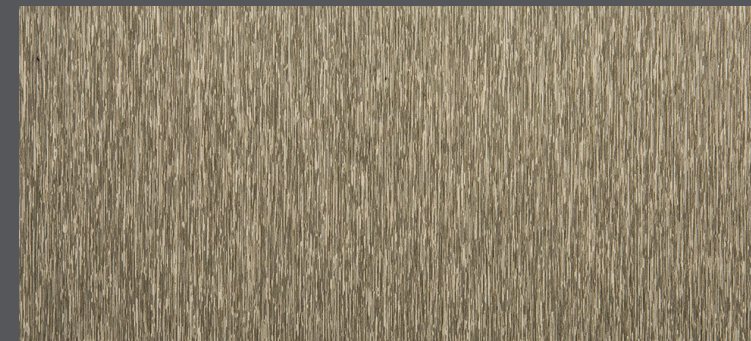
ASH CLOUD

6622



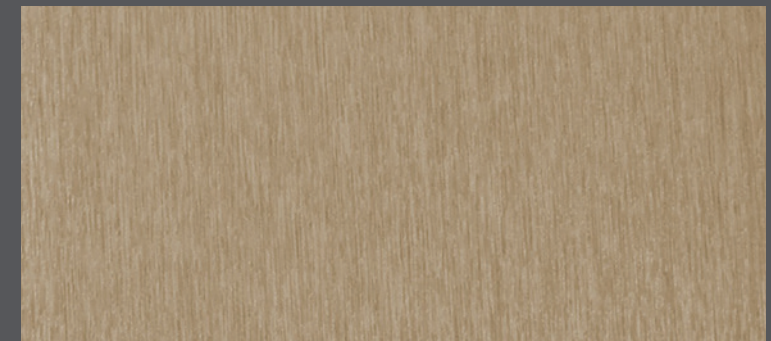
SEA GRASS

6624



ANTIQUÉ PEWTER

9908



TOASTED COCONUT

6625



BURNISHED NICKEL

6623



BRUSHED TITANIUM

6422

